

QTY: \_\_\_\_\_ MODEL#: \_\_\_\_\_ FINISHED OPENING: \_\_\_\_\_

COLOR: \_\_\_\_\_  STANDARD  INDUSTRIAL

QUOTATION

ORDER

PO# \_\_\_\_\_

**GASKETING**

- FULL  PARTIAL
- FRONT \_\_\_\_\_
- BACK \_\_\_\_\_
- BOTTOM \_\_\_\_\_

**FASTENERS FOR**

- STEEL JAMB
- WOOD JAMB

**ADA APPROVED WINDOWS**

- 12x30 (24" & 27" PANELS ONLY)
- 16x30 (30" PANELS ONLY)
- 20x30 (32" & 34" PANELS ONLY)
- 24x30 (36" & WIDER PANELS ONLY)

**NOTES:**

- 1) ADA WINDOWS ARE AVAILABLE IN SINGLE PANE ONLY!
- 2) ADA WINDOWS ARE REQUIRED TO BE PLACED NO MORE THAN 40" ABOVE FINISHED FLOOR AND THEREFORE CAN NOT BE MOVED ON THE PANEL!

**SEALS**

- TOP SEAL
- EXTENDED \_\_\_\_\_ GAP
- UPPER HINGE SEAL
- LOWER HINGE SEAL

**HARDWARE**

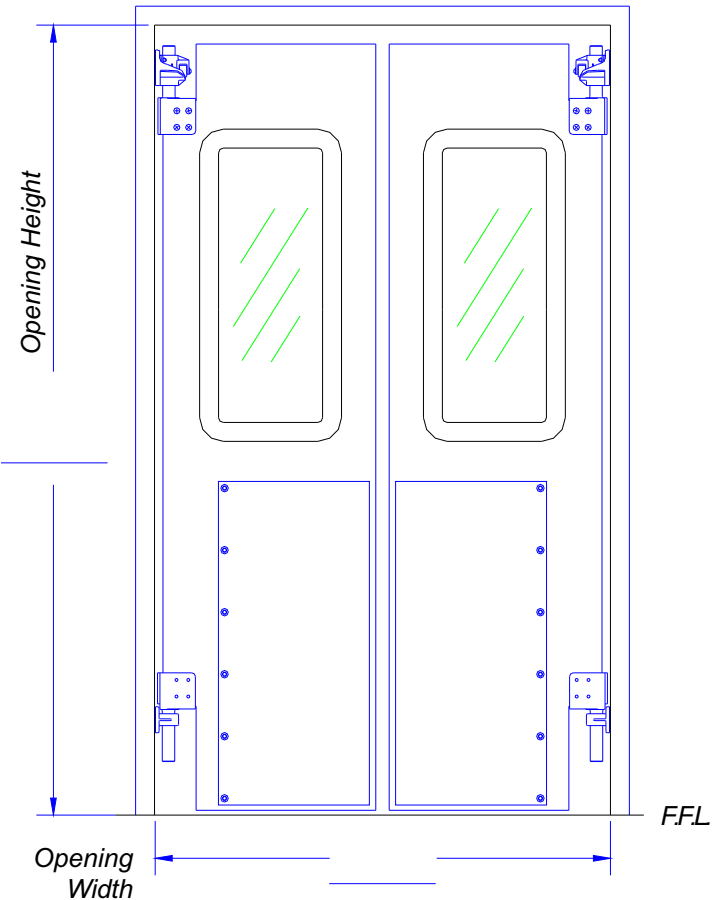
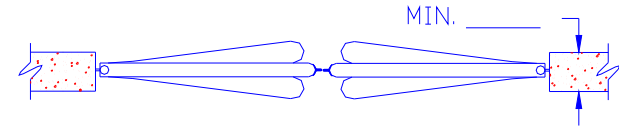
- 90° X 90° HARDWARE
- 180° X 90° HARDWARE
- LOWER HINGE GUARD \_\_\_\_\_
- ROTO  ALUM  ST/STEEL

**BUMPERS**

- BUMPER \_\_\_\_\_ HIGH TEARDROP
- COLOR \_\_\_\_\_
- KICKPLATE \_\_\_\_\_ HIGH
- COLOR \_\_\_\_\_

**ACCESORIES**

- SPRING ASSIST
- LOW-RISE
- NO-RISE
- HOLD OPEN
- WELD PLATES
- LOCKING DEVICE \_\_\_\_\_
- TOP/BOTTOM CANEBOLTS



**2484 PANEL WITH 12X30 WINDOW SHOWN IN DRAWINGS**

INDUSTRIAL DOORS WITH BUMPERS, SEE ATTACHMENT FOR RECOMMENDED OR REQUIRED POST LOCATIONS.

NOTES: \_\_\_\_\_  
\_\_\_\_\_

DRAWN BY \_\_\_\_\_ DATE \_\_\_\_\_



**Chase Doors**

World's Leading Manufacturer Of Traffic Doors

DRAWING NAME:  
SHOP-ADA-D.DWG

Cincinnati Ohio, and Redmond Oregon • www.chasedoors.com  
Phone Toll Free: 1-800-543-4455 • FAX: 1-800-978-6570

TO: \_\_\_\_\_

JOB: \_\_\_\_\_

**DURULITE DOUBLE - ADA WINDOW SHOP DWG**