

DWG # 2007A | DRAWN BY: MLW | DATE: 02-20-03
REVISION DATE: 07-06-2006 BY: MLW

PREPARATION
MEASURE WIDTH AND HEIGHT OF FRAMED OPENING AND COMPARE WITH DIMENSIONS GIVEN AT TIME OF ORDERING.

NOTE: THIS MODEL OF DOOR WAS CUT TO THE DIMENSIONS GIVEN BY CUSTOMER AND IS NOT ADAPTED TO FIT INTO A DIFFERENT SIZE OF OPENING!

FRAMED OPENING DIMENSIONS MUST MEET ORDER DIMENSIONS WITHIN THE FOLLOWING TOLERANCES:

SINGLE DOORS	DOUBLE DOORS
HEIGHT: +1/4" -1/4"	HEIGHT: +1/4" -1/4"
WIDTH: +1/4" -1/4"	WIDTH: +1/2" -1/2"

IF THE FRAMED OPENING DOES NOT MATCH THE ORDER DIMENSIONS WITHIN THESE TOLERANCES CALL THE FACTORY AT 1-800-547-6856

FOR PROPER INSTALLATION
FRAMED OPENINGS MUST BE SQUARE AND PLUMB. MAKE NECESSARY ADJUSTMENTS TO SQUARE AND PLUMB OPENING. ALL DOORS MUST BE INSTALLED PLUMB FOR PROPER OPERATION.

DRILL BIT SIZES
For Steel Jamb Up To 3/8" Thick, USE: 1/8" Drill Bit
For Steel Jamb 3/8" Thick & Over, USE: 13/64" Drill Bit
For Wood Jamb Use: 3/16" Drill Bit

FASTENERS
For Steel Jamb Use: 1/4" X 1" TEK Screw
For Wood Jamb Use: 1/4" X 2" Hardware Screw

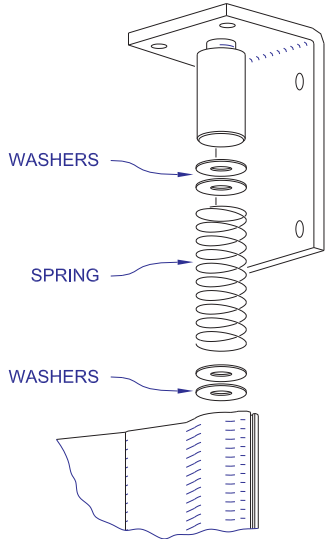


Figure 2

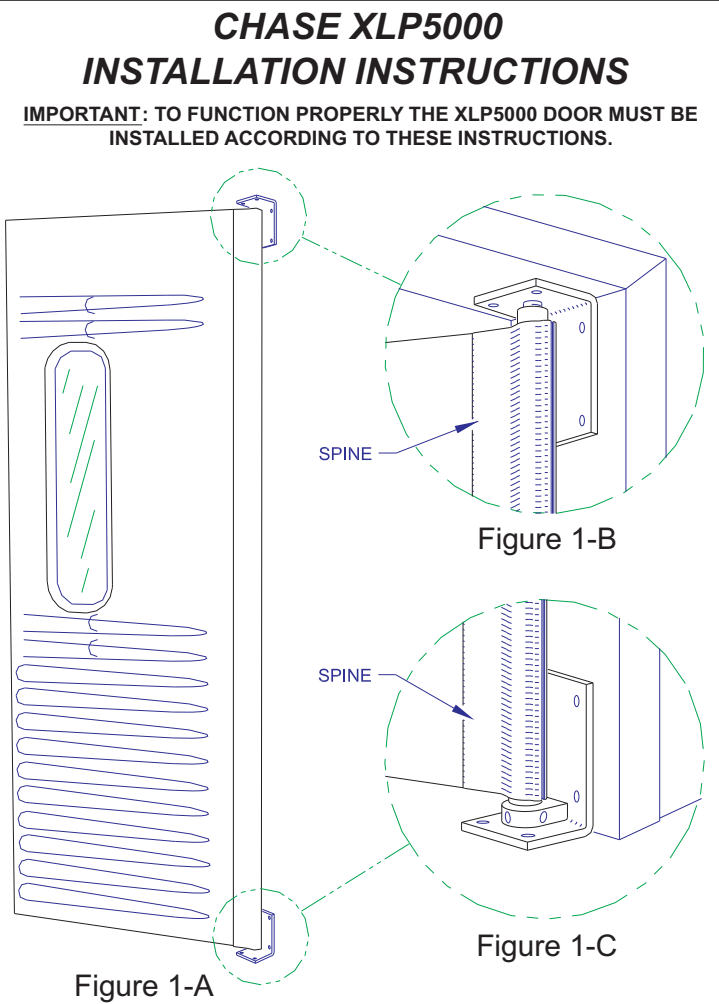
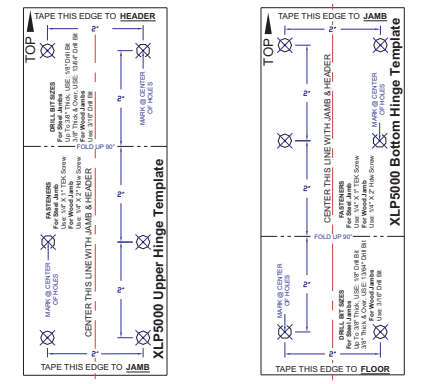


Figure 1-A

Figure 1-B

Figure 1-C



Upper Hinge Template Lower Hinge Template

Figure 3

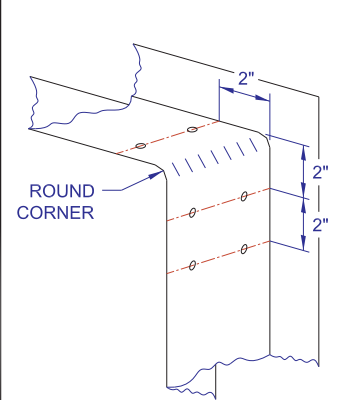


Figure 4

NOTE: PROCEED ONLY AFTER COMPLETING THE "PREPARATION" SECTION AT LEFT.

STEP 1)
Remove door panel from packaging.
DO NOT CUT THE STRAP WHICH HOLDS THE TWO HINGES IN PLACE AT THIS TIME. THE TOP HINGE CONTAINS A SPRING UNDER COMPRESSION (See Figure 2).

STEP 2) Marking & Drilling for Mounting Holes

NOTE: If installing into factory pre-drilled frames, skip this step and proceed to Step 3.

Locate the Upper & Lower Hinge Templates, see Figure 3. Fold template at the 90° Fold Line as indicated on the templates and place at centerline of Header and Jamb (upper template) and the Floor and Jamb (lower template). Use a small level to make sure the bottom holes on the template are level before proceeding.

NOTE: Adjustment to the Upper Template may be necessary if there is a fillet weld which rounds the corner of your frame. Make sure the dimensions indicated on the template are taken from the face of the Jamb and Header as shown in Figure 4.

Tape the Templates in the proper position and mark the holes with a center punch. Remove templates and drill pilot holes with appropriate size drill bits for your application, see "DRILL BIT SIZES" at left.

STEP 3) Mounting Door in Jamb

Place panel completely into opening as near to center as possible and carefully remove strapping wire that holds the hinges in place.

NOTE: THE TOP HINGE CONTAINS A SPRING UNDER COMPRESSION, see Figure 2.

If your upper hinge becomes dis-assembled refer to Figure 2 for assistance in reassembling the hinge. Set door in proper location and match up the pre-drilled holes with the mounting holes in the upper and lower hinges. Insert all appropriate fasteners (see "FASTENERS" section at left) and tighten securely.

STEP 4) Finalizing Installation

The lower hinge is secured with one "Half Dog Setscrew" and two "Knurled Point Setscrews", there should be No Need to adjust swing if the Opening is Square & Plumb.

If your panel/panels are kept open by Air Flow you may add washers or spacers to tighten the upper hinge spring, see figure 2.

If your doors are not returning to center you may need to adjust the swing and reset the doors to the center position. Refer to Page 2 "Center Swing Adjustment".

For further assistance please contact our customer service department at 1-800-543-4455.

CHASE XLP5000
"CENTER SWING ADJUSTMENT"

DWG # 2007A-2 | DRAWN BY: MLW | DATE: 07-07-06
 REVISION DATE:

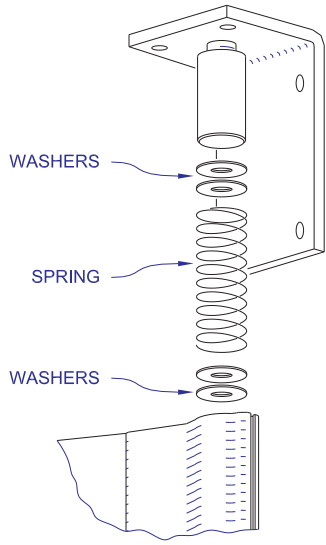


Figure 2

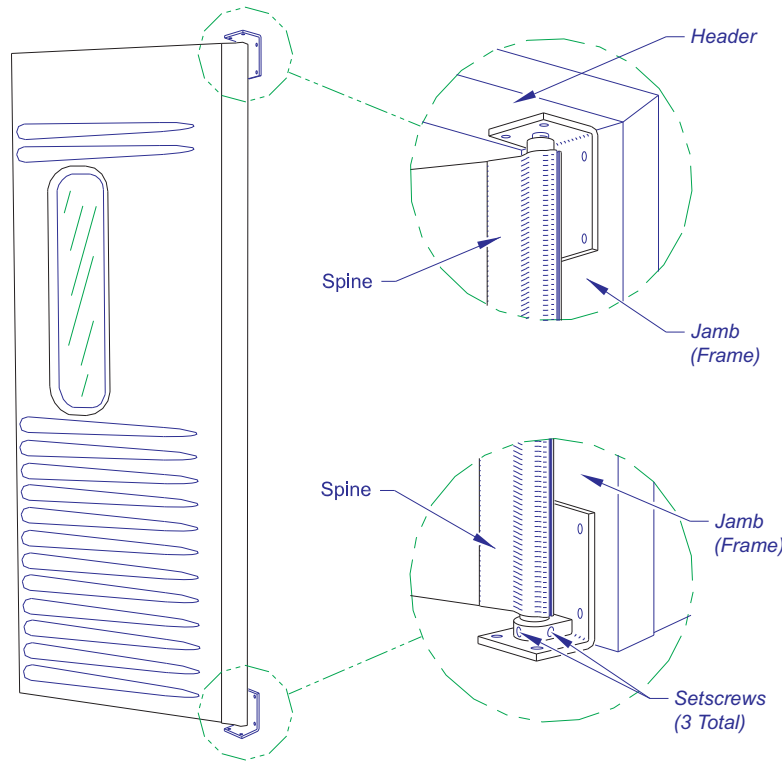


Figure 1

STEP 1)

Remove the "Half-Dog" Setscrew from the lower bracket assembly, see Figure 3 for location.
 Loosen both "Knurled" Setscrews in the lower bracket assembly so cam will not move with door, see Figure 3.
 Set the door to the closed "Center" position and **FIRMLY TIGHTEN** the two "Knurled" setscrews (Figure 3).

STEP 2)

Remove fasteners from lower hinge bracket and floor anchors if applicable.
 Have another person hold the door upright, or securely prop the door upright before proceeding.
 Remove the fasteners from the upper hinge bracket at the Jamb.
 Check that the door is being held securely and remove fasteners from the Header.
 Compress the spring by pulling down on the upper hinge bracket and remove panel from opening.
 Slowly and carefully allow the upper hinge to rise until the internal spring no longer has tension.
 Dis-assemble the upper hinge and lay panel flat on the floor.

STEP 3)

Remove lower hinge assembly (with Cam) from spine.

IMPORTANT: DO NOT LOOSEN BOTH "KNURLED" SETSCREWS!

Remove One (1) "Knurled" Setscrew leaving the other security tightened.
 Using an Electric Drill and a 1/4" Diameter Drill Bit, carefully place the drill bit into the threaded opening where the "Knurled" setscrew was (see Figure 3), and drill into the cam a total depth of 1/8".

NOTE: The hole for the "Half Dog" setscrew must be perpendicular to the center line of the cam or the cam will turn when you tighten the "Half Dog" setscrew, resulting in misalignment of the panel/panels.

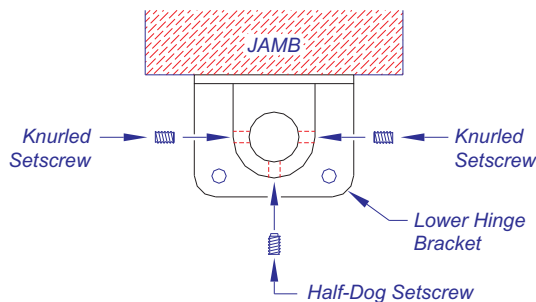
Place the "Half Dog" setscrew into the threaded opening you just drilled and tightly firmly.

IMPORTANT: DO NOT INSERT THE "KNURLED" SETSCREW INTO THE SPACE PREVIOUSLY OCCUPIED BY THE "HALF DOG" SETSCREW. Discard the unused "Knurled" Setscrew!

STEP 4)

Insert lower hinge assembly (with Cam) into spine.
 Assemble the upper hinge assembly as seen in Figure 2, and pull down to compress the hinge.
 Place panel completely into opening and slowly release the upper hinge assembly.
 Go through Step 2 in reverse order to complete the panel installation.

 If a mistake is made during this drilling process you may need to replace the Cam and the Setscrews. You may contact our customer service department at 1-800-543-4455 to order replacement parts.



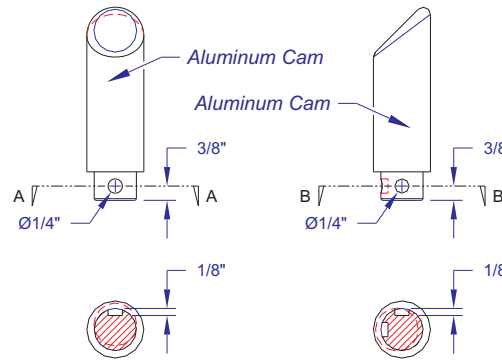
TOP VIEW
 (Setscrew Arrangement as Shipped from Factory)

Figure 3



"Knurled" Setscrew

Figure 4



SECTION "A-A"
FRONT VIEW
 (Original Hole Location)

SECTION "B-B"
SIDE VIEW
 (New Hole Location)

Figure 5