

DURULITE NO-RISE INSTALLATION INSTRUCTIONS

PREPARATION

MEASURE WIDTH AND HEIGHT OF FRAMED OPENING AND COMPARE WITH OTHER DIMENSIONS.
 FRAMED OPENING DIMENSIONS MUST MEET ORDER DIMENSIONS WITHIN THE FOLLOWING TOLERANCES;
 SINGLE DOORS: HEIGHT: +1" -1/2"
 WIDTH: +0" -1/2"
 DOUBLE DOORS: HEIGHT: +1" -1/2"
 WIDTH: +3/8" -1"
 IF THE FRAMED OPENING DOES NOT MEET THE ORDER DIMENSIONS WITHIN THESE TOLERANCES CALL THE FACTORY AT 1-800-547-6856

FOR PROPER INSTALLATION

FRAMED OPENINGS MUST BE SQUARE AND PLUMB. MAKE ANY NECESSARY ADJUSTMENTS TO SQUARE AND PLUMB OPENING. DURULITE DOORS MUST BE INSTALLED PLUMB.

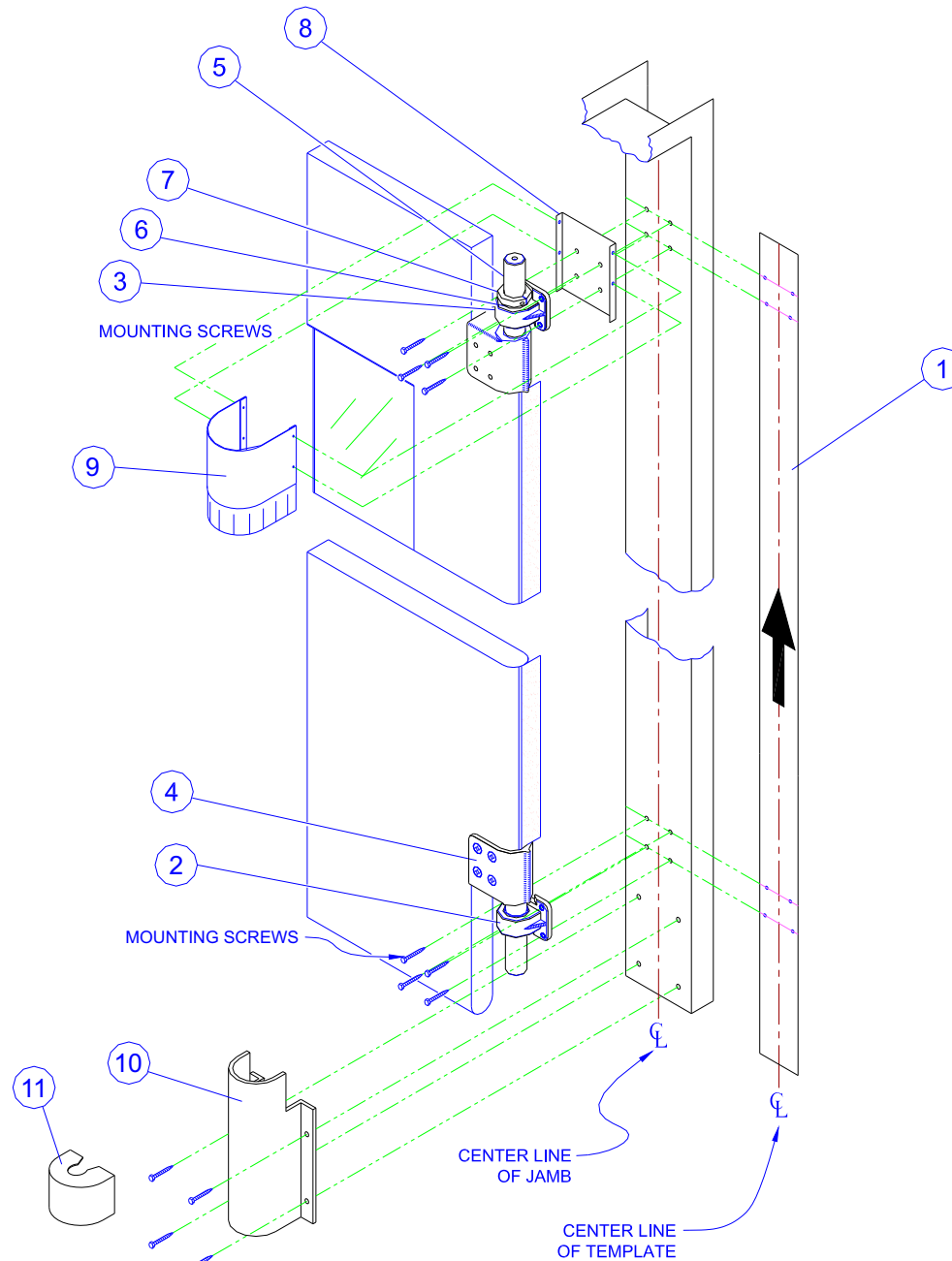
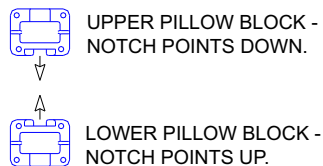
DRILL BIT SIZES

FOR: ② ③ ⑩
 FOR STEEL JAMBS UP TO 3/8" THICK
 USE: 1/8" DRILL BIT.
 FOR STEEL JAMBS 3/8" THICK AND ABOVE
 USE: 13/64" DRILL BIT.
 FOR SECURITY DOORS
 USE: #7 DRILL BIT.
 ON SECURITY DOORS USE A 1/4-20 TAP

FASTENERS

FOR: ② ③ ⑩
 FOR STEEL JAMB
 USE: 1/4" X 1-1/2 TEK SCREW.
 FOR SECURITY DOORS
 USE: 1/4-20 X 7/8" SOCKET HEAD.

IMPORTANT



STEP 1. MARKING AND DRILLING JAMB FOR HARDWARE.

NOTE: PROCEED ONLY AFTER COMPLETING THE "PREPARATION" SECTION AT LEFT.
 ESTABLISH THE CENTERLINE OF JAMB. PLACE TEMPLATE ① ON THE INSIDE FACE OF JAMB WITH BOTTOM OF TEMPLATE TOUCHING FINISHED FLOOR OR SILL. LINE UP CENTERLINE ON TEMPLATE WITH CENTERLINE OF JAMB.
 MARK HOLES THROUGH TEMPLATE ① ONTO JAMB WITH CENTER PUNCH. **NOTE:** SEE "DIM A" FROM "HARDWARE LOCATION" SECTION, PAGE 2, FOR YOUR APPLICATION.
 REMOVE TEMPLATE ① FROM JAMB AND DRILL HOLES (SEE "DRILL BIT SIZES" AT LEFT).

STEP 2. ATTACHING HARDWARE AND HANGING DOOR.

ATTACH LOWER PILLOW BLOCK ② TO JAMB, NOTCH SIDE UP, WITH SINGLE FASTENER (DO NOT TIGHTEN).
 PLACE UPPER PILLOW BLOCK ③ OVER UPPER HINGE ADAPTER ⑤ SHAFT WITH THE NOTCH POINTING DOWN. PLACE THE TWO (2) BEARING WASHERS ⑥ OVER UPPER HINGE ADAPTER ⑤ SHAFT. PLACE LOCK COLLAR ⑦ OVER UPPER HINGE ADAPTER ⑤ SHAFT (DO NOT TIGHTEN, SEE DETAIL "A-1" BELOW).
 TILT THE LOWER PILLOW BLOCK ② TO APPROXIMATELY A 30° ANGLE (THIS ALLOWS YOU TO INSERT THE LOWER HINGE ADAPTER INTO THE LOWER PILLOW BLOCK WITHOUT INTERFERENCE FROM THE HEADER). LIFTING THE DOOR, INSERT THE LOWER HINGE ADAPTER ④ SHAFT INTO THE LOWER PILLOW BLOCK ②.
 STAND THE DOOR UPRIGHT. PLACE THE BACKER PLATE ⑧ BEHIND THE UPPER PILLOW BLOCK ③ AND FASTEN TO JAMB USING APPROPRIATE FASTENERS AND TIGHTEN.
 INSERT REMAINING FASTENERS INTO LOWER PILLOW BLOCK ② AND TIGHTEN.

STEP 3. DOOR SWING AND HEIGHT ADJUSTMENT.

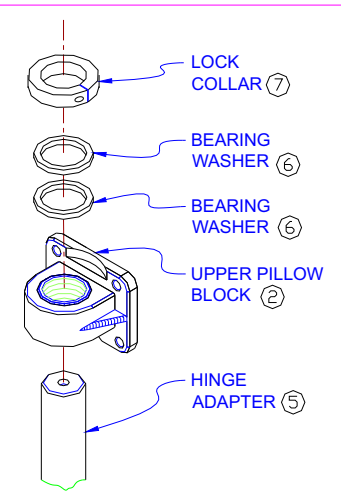
NOTE: IF YOUR OPENING HEIGHT IS **NOT** WITHIN TOLERANCE AS INDICATED UNDER THE "PREPARATION" SECTION AT LEFT CALL THE FACTORY AT 1-800-547-6856, OTHERWISE CONTINUE FROM HERE.
 THE DOOR SHOULD BE LIFTED TO A HEIGHT WHERE THE TOP OF THE DOOR IS 1/4" FROM THE HEADER (NORMALLY 1-3/4" FROM FINISHED FLOOR). IF NO OPERATER IS USED THE DISTANCE FROM FINISHED FLOOR TO BOTTOM OF DOOR WILL BE 7/8".
 WITH DOOR SET TO CORRECT HEIGHT, TIGHTEN LOCK COLLAR ⑦ USING APPROPRIATE SIZE HEX-KEY WRENCH.

NOTE: IF THE SIZE OF YOUR DOOR IS 4296 OR LARGER, IT IS NECESSARY TO INSERT A SPLIT PIN INTO THE UPPER HINGE ADAPTER ⑤ SHAFT (SEE "SPLIT PIN INSTALLATION INSTRUCTIONS", PAGE 2).

STEP 4. HINGE GUARD AND SEAL

PEEL PAPER FROM DOUBLE FACE TAPE ON UPPER HINGE SEAL ⑨. PLACE OVER BACKER PLATE ⑧ (SKIRT SIDE DOWN), ATTACH WITH #10 TEK SCREWS.
 SET LOWER HINGE GUARD ⑩ INTO PLACE, ON FLOOR AND AGAINST JAMB, CENTERED OVER LOWER PILLOW BLOCK ②. MARK HOLES, REMOVE LOWER HINGE GUARD ⑩ AND DRILL (SEE "DRILL BIT SIZE" AT LEFT).
 ATTACH LOWER HINGE GUARD ⑩ WITH FASTENERS AND SNAP SOLID RISER ONTO LOWER HINGE ADAPTER ④ SHAFT, JUST ABOVE THE LOWER PILLOW BLOCK ②.

NOTE: CHECK DOOR AT FULL SWING IN BOTH DIRECTIONS. IT MAY BE NECESSARY TO TRIM GASKET MATERIAL IN SOME AREAS.



DETAIL "A-1"

DURULITE NO-RISE INSTALLATION INSTRUCTIONS

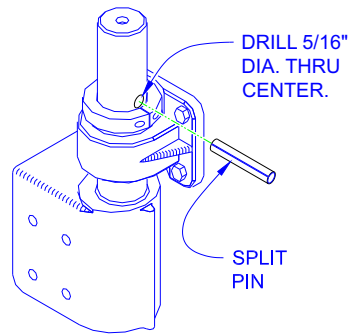
PAGE 2

SPLIT PIN INSTALLATION INSTRUCTIONS

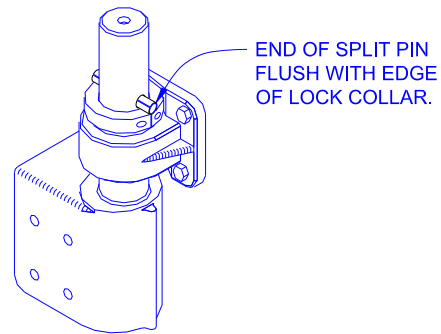
(FOR DOORS 4296 AND LARGER ONLY)

After final adjustment of door height, drill a 5/16" hole through the center of the Upper Hinge Adapter Shaft just above the Lock Collar (See Detail "B-1").

Drive the 5/16" Split Pin into the hole. Make sure an equal amount of the Split Pin extends from both sides of the Hinge Adapter Shaft (See Detail "B-2").



DETAIL "B-1"

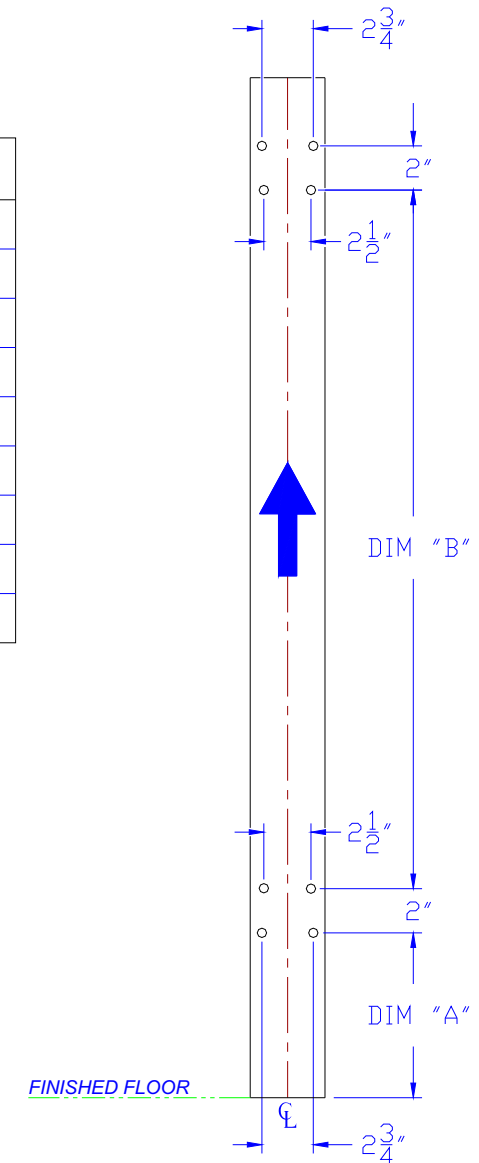


DETAIL "B-2"

HARDWARE LOCATION

DOOR HEIGHT	DIM "A" No Operator	DIM "A" With Operator	DIM "B"
78"	8 1/2"	10 1/4"	61"
80"	8 1/2"	10 1/4"	63"
84"	8 1/2"	10 1/4"	67"
90"	8 1/2"	10 1/4"	73"
96"	8 1/2"	10 1/4"	79"
102"	8 1/2"	10 1/4"	85"
108"	8 1/2"	10 1/4"	91"
114"	8 1/2"	10 1/4"	97"
120"	8 1/2"	10 1/4"	103"

NOTE: DIMENSIONS LISTED PERTAIN ONLY TO STANDARD FINISHED OPENING HEIGHTS. PLEASE VERIFY YOUR FINISHED OPENING HEIGHT WITH THE FACTORY PRIOR TO DRILLING. CONTACT THE FACTORY AT 1-800-547-6856.



IMPORTANT:

DIMENSIONS SHOWN ARE MEASURED UP FROM THE FINISHED FLOOR LINE.