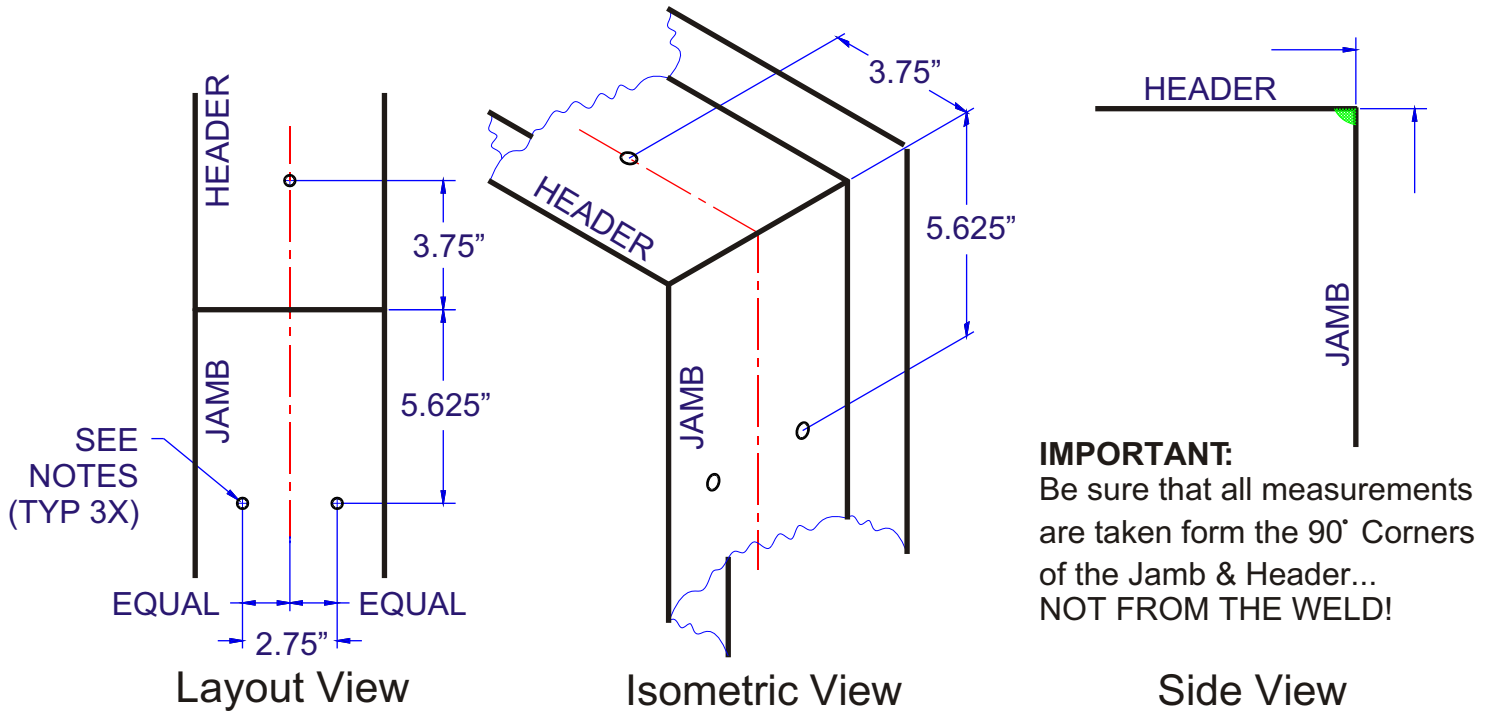


## HOLE LOCATIONS FOR RETAILER HARDWARE



## UPPER HINGE AREA

### NOTES:

#### DRILL BIT SIZES

##### For Steel Jamb:

Use 1/8" Drill Bit for Jambs up to 3/8" Thick  
Use 3/16" Bit for Jambs in Excess of 3/8" Thick

##### For Wood Jamb:

Use 3/16" Drill Bit

#### FASTENERS

##### For Steel Jamb:

Use 1/4"-14 X 1 1/2" Tek Screw

##### For Wood Jamb:

Use 1/4" X 3" Wood Screw

